

Office-Retail Space in Downtown Tallahassee

322 W Park Ave, Tallahassee, FL 32301

Listing ID: 30849435
Status: Active
Property Type: Office For Lease
Office Type: Mixed Use
Contiguous Space: 800 SF
Total Available: 800 SF
Lease Rate: \$22.50 PSF (Annual)
Base Monthly Rent: \$1,500
Lease Type: See Agent

Overview/Comments

Excellent in-town location and very walkable. Space is a blank slate ready for your office or small retail/salon. White picket fence and rocking chair front porch spans the front of the building. There is an residential living space attached with separate entrance, kitchen, living room and bath. Owner is willing to lease the space to tenant for additional \$1500 per month. Handicap accessible and plenty of parking in rear. Additional 3 rooms on the 2nd floor may be available should tenant want to expand and build out. This is a very unique opportunity for the price.



More Information Online

<https://www.talrex.com/listing/30849435>

QR Code

Scan this image with your mobile device:



General Information

Tax ID/APN: 2136402844430
Office Type: Mixed Use, Other
Zoning: SCD-CENTRAL CORE

Gross Building Area: 2,301 SF
Building/Unit Size (RSF): 800 SF

Available Space

Suite/Unit Number: 1
Space Available: 800 SF
Minimum Divisible: 800 SF
Maximum Contiguous: 800 SF
Space Subcategory 1: Mixed Use
Space Type: Relet
Date Available: 07/13/2023
Lease Rate: \$22.50 PSF (Annual)
Parking Spaces: 15

Space Description Excellent in-town location and very walkable. Space is a blank slate ready for your office or small retail/salon. White picket fence and rocking chair front porch spans the front of the building. There is an residential living space attached with separate entrance, kitchen, living room and bath. Owner is willing to lease the

space to tenant for additional \$1500 per month. Handicap accessible and plenty of parking in rear. Additional 3 rooms on the 2nd floor may be available should tenant want to expand and build out. This is a very unique opportunity for the price.

Area & Location

Property Located Between:	W Call and W College	Site Description:	Corner Lot, Parking in Rear of Building
Highway Access:	Highway 90	Area Description:	Close proximity to FSU College of Law, Challenger Learning Center and Leroy Collins Library
Airports:	TLH International		

Building Related

Total Number of Buildings:	1	Parking Description:	Free parking in rear of building or metered parking in front
Number of Stories:	1	Passenger Elevators:	0
Year Built:	1944	Freight Elevators:	0
Year Renovated:	2009	Heat Type:	Electricity
Roof Type:	Gable	Heat Source:	Central
Construction/Siding:	Wood Siding	Air Conditioning:	Package Unit
Parking Type:	Surface		

Exterior Description Gravel parking and wheelchair accesible in rear. Rocking chair front porch and white picket fence. Beautiful landscaping in front.

Land Related

Water Service:	Municipal
Sewer Type:	Municipal

Location

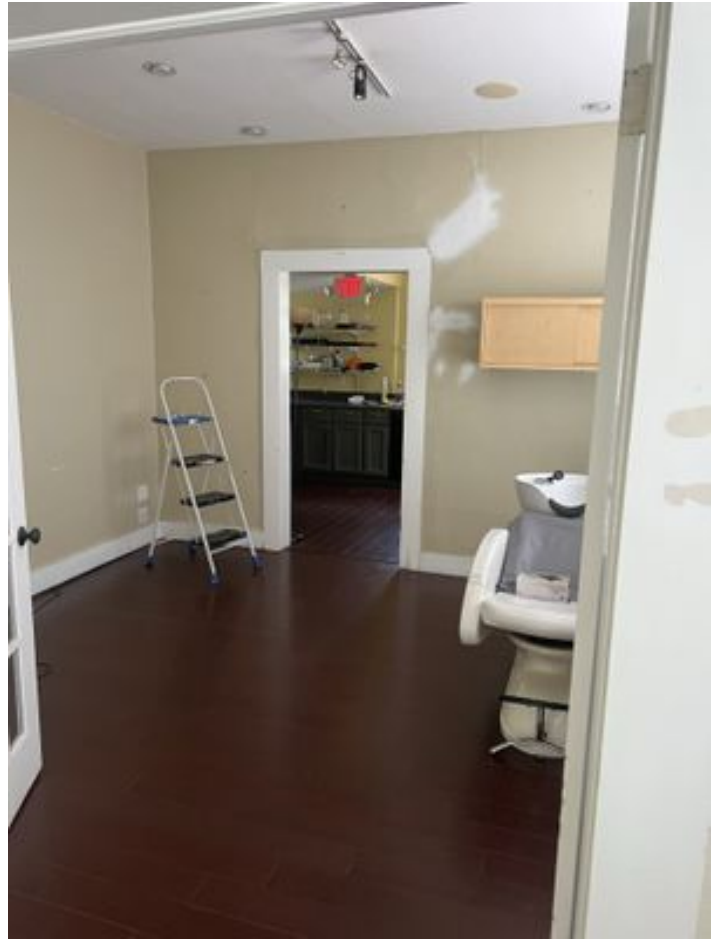
Address:	322 W Park Ave, Tallahassee, FL 32301
County:	Leon
MSA:	Tallahassee



Property Images



IMG_7687



IMG_7688



IMG_7690



IMG_7691



IMG_7692



IMG_7693



IMG_7698



IMG_7695



IMG_7704



IMG_7697



IMG_7705



IMG_7707



IMG_7708



IMG_7709



IMG_7710



IMG_7713

Property Contacts



Tracy Waters

Premier Commercial Group, LLC

850-545-2282 [M]

850-205-5201 [O]

twaters@teampcg.com